

HUNTING EMOTIONS

BRODNICA • DĄBROWA • LUTÓWKO • RUNOWO • RÓŻANNA • TUCHOLA • ZAMRZENICA



Regional Directorate
of the State Forests in Toruń

A LOT OF EMOTIONS ARE EVOKED BY EVERY HUNT.

We would like to experience with you the moments which often belong to our dreams. We believe that many of them will be fulfilled. We are inviting hunters, adventurous people and nature lovers.

HAVE A GOOD HUNT!

- The foresters of the Regional Directorate of the State Forests in Toruń



OUR REGION

page 2

BRODNICA

page 4

DĄBROWA

page 6

LUTÓWKO

page 8

RUNOWO

page 10

RÓŻANNA

page 14

TUCHOLA

page 16

ZAMRZENICA

page 18

ZAMRZENICA (WIERZCHLAS)

page 20

HUNTING DISTRICTS

in the Forest Districts of the Regional Directorate of the State Forests in Toruń

REGION: THE BRODNICA LAKELAND

BRODNICA



The richness of the Drwęca Valley encourages hunting. The wild spots clustered in the vicinity of the wild river provide perfect opportunities for encountering wild animals. Numerous bird species which are nesting here make roe buck hunting a unique experience. Singing birds will enchant not only the hunters. For centuries the Drwęca River path has been a magnet for households including the castles of the Teutonic Knights, the ruins of which are considered to be one of the numerous attractions of the region.



Meals



Wolf
presence



Kayaks



Attractions associated with
the Teutonic Knights

Brodnica Forest District

ul. Sądowa 16, 87-300 Brodnica
brodnica@torun.lasy.gov.pl
+48 56 494 39 00

hunting area

9 470 ha

forests constitute one-third
of the area, mostly oak-pine
forests

DWOREK POLSKI GUEST HOUSE
53°15'08"N 19°17'14"E



206,08 CIC / 2015

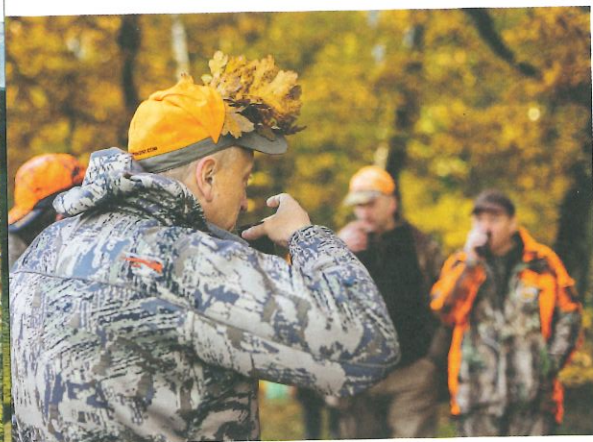


**THE DRWĘCA VALLEY STANDS OUT
FOR ITS NATURAL, HISTORICAL
AND CULTURAL VALUE.**



REGION: THE KRAJNA LAKELAND

LUTÓWKO



Raised stands



Meals



Wolf presence

Lutówko Forest District

Lutówko 18, 89-407 Lutówko

lutowko@torun.lasy.gov.pl

+48 52 388 47 22

The forests of our Forest District served as the representative hunting areas for the President of Poland until 1939. They are still attracting hunters from all over Europe. The diversity of habitats creates ideal living conditions for particularly dense game populations. Exciting individual hunts for big game and traditional collective hunts are the main advantage of these hunting districts. Encounters with beavers, wolves and many species of birds of prey can be an unforgettable experience.

hunting area

17 900 ha

50% terenów leśnych z przewagą lasów liściastych i bagiennych



The location of the Sypniewo lodge ensures an easy access to the hunting areas in the Lutówko Forest District and the Runowo Forest District.



115,00 CIC / 2014

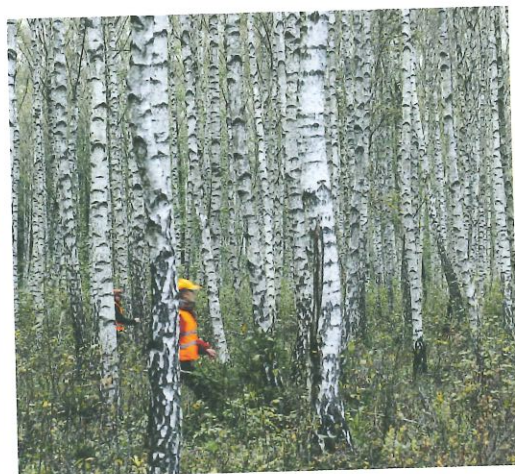


191,01 CIC / 2016



REGION: THE KRAJNA LAKELAND

RUNOWO



Raised stands



Meals



Wolf presence

Runowo Forest District

Runowo Krajeńskie 55

89-421 Runowo Krajeńskie

runowo@torun.lasy.gov.pl

+48 52 389 76 08

In the interwar period the President of Poland hunted in our forests accompanied by numerous prominent guests. This hardly accessible Messa Peatland, comprising the area of peat exploitation which dates back to the 1930s, is now overgrown with rich vegetation, which gives wild animals a perfect refuge. The large percentage share of the oak forests provides wild boar and deer with an easy access to food, and the hunters with an incredible opportunity for encountering their lifetime trophies. These are also stunningly beautiful areas for walking and cycling.

hunting area

5 000 ha

forests, mostly deciduous and marsh forests, constitute 56% of the area



The location of the Sypniewo lodge ensures an easy access to the hunting areas in the Lutówko Forest District and the Runowo Forest District.



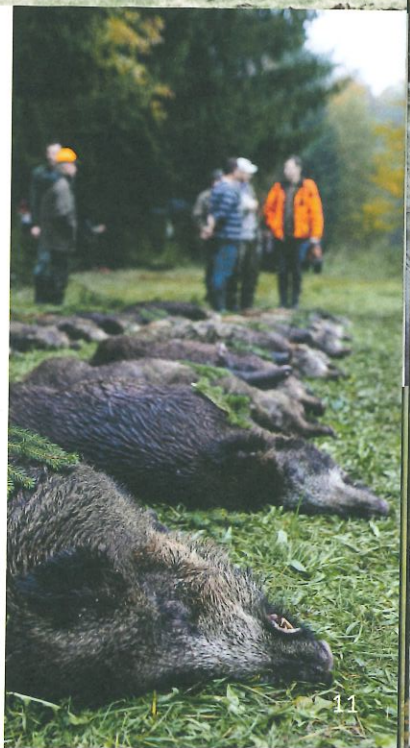
Photo: Bogusław Różycki



183,59 CIC / 2016



112,73 CIC / 2015





REGION: THE BORDERLAND BETWEEN THE TUCHOLA FOREST AND THE BYDGOSZCZ FOREST

RÓŻANNA



Meals



Wolf presence



Fishing



Forest horse riding trails

Różanna Forest District
ul. Leśna 5, 86-010 Koronowo
rozanna@torun.lasy.gov.pl
+48 52 382 05 10

The hardly accessible wild spots along Koronowski Reservoir attract game and increase the chances of a hunting success. For the enthusiasts of roe buck hunting these are the places where particularly interesting roe bucks with abnormal antlers can be searched for. For our guests we have prepared accommodation in the immediate vicinity of the waters of the reservoir. This charming scenery is ideal for family tourism, trekking, cycling and horse riding.

hunting area
8 900 ha

forests, with the prevalence of pinewoods, constitute 62% of the area



2012



Photo: Archive of Różanna Forest District



**THE ATTRACTIVE LOCATION OF
PODBRODZIE LODGE BY KORONOWSKI
RESERVOIR OPENS UP POSSIBILITIES
OF ACTIVE TOURISM.**



REGION: THE TUCHOLA FOREST

TUCHOLA



The forester's lodge Świt by the Brda River lies in the heart of the Tuchola Forest. It offers a warm welcome and hospitality to everyone looking for tranquility. This area is the biosphere reserve. The view of the Brda River gorge due to its mountainous character will enrich your return from the morning roe buck hunt. Tuchola, the regional capital, which boasts of the cultural heritage of the Borowiacy (the local ethnic group) as well as the long tradition of educating the future generation of foresters in Poland, is conveniently located for our guests, only 15 minutes away by bike.



The shooting range „Plaskosz”



Kayaking on the Brda River



The International Festival of Hunting Music in Tuchola



Meals



Wolf presence

Tuchola Forest District
Gołąbek 4, 89-511 Cekcyn
tuchola@torun.lasy.gov.pl
+48 52 334 80 05

hunting area
3 400 ha
forests, mostly pinewoods,
constitute 70% of the area

THE FORESTER'S LODGE ŚWIT
53°32'23"N 17°53'06"E



192,02 CIC / 2016

*Just follow a short path
behind the forester's lodge
to reach the bank of the
Brda River.*

**ŚWIT IS LOCATED IN THE BIOSPHERE
RESERVE. NEARBY THERE ARE HUNTING
DISTRICTS, THE TOWN OF TUCHOLA
AND THE SHOOTING RANGE IN PLASKOSZ.**

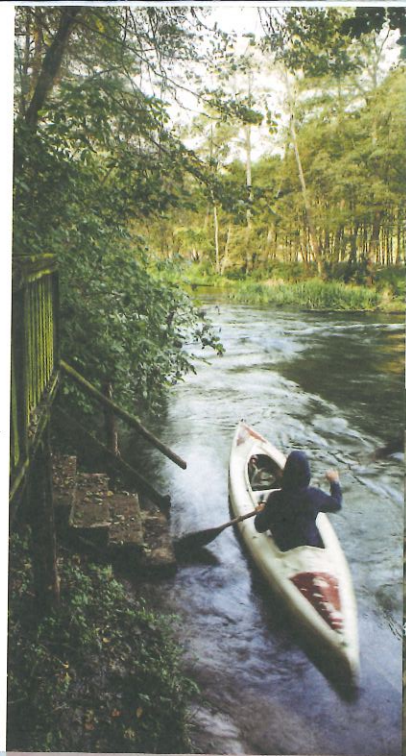


Photo: Lukasz Gwizdzajel

REGION: BORY TUCHOLSKIE

ZAMRZENICA



In Zamrzenica the Brda River turns into Koronowski Reservoir. Here, on the peninsula, a nineteenth-century building of the former forest district office offers accommodation to its guests. The hunters from many countries keep returning here, to the places they are familiar with. According to our guests, individual big game hunts as well as traditional driven hunts we organise are of top quality. Interesting trophies of fallow deer and red deer are the tangible confirmation of this fact.



Raised stands



Meals



Wolf presence



Kayaks



Bikes

Zamrzenica Forest District
Zamrzenica 1 A, 89-510 Bysław
zamrzenica@torun.lasy.gov.pl
+48 52 334 11 75

hunting area
17 300 ha
forests, mostly pinewoods,
constitute 56% of the area

ZAMRZENICA LODGE
53°28'25"N 17°53'48"E



185,87 CIC / 2016



193,77 CIC / 2015

**OUR FORESTS ARE PICTURESQUELY
SITUATED IN THE MIDST OF NUMEROUS
LAKES, STREAMS, RIVERS, AS WELL AS
THE WATERS OF THE RESERVOIR.**



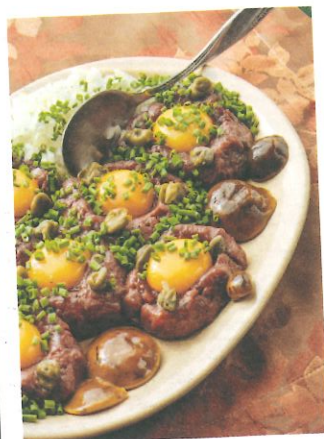
REGION: THE TUCHOLA FOREST

WIERZCHLAS

IN ZAMRZENICA FOREST DISTRICT



WIERZCHLAS LODGE
53°31'02"N 18°06'25"E



Raised stands



Meals



Wolf presence

Zamrzenica Forest District
Zamrzenica 1 A, 89-510 Bystaw
zamrzenica@torun.lasy.gov.pl
+48 52 334 11 75

The largest natural concentration of yew trees in Europe can be found in Wierzchlas. Near the yew tree forest there is a cosy hunting lodge in the former forestry district office building dating back to the nineteenth century. Taking part in the hunts in the groups consisting of only few hunters increases the certainty of a hunting success here. In the homely atmosphere, after all-day-long hunting hardships the unique tastes of the old traditional Polish cuisine become invaluable. Venison reigns on the local tables.

hunting area

12 000 ha

forests, mostly pinewoods,
constitute 62% of the area

Leon Wyczółkowski Nature
Reserve of the Old Polish
Yew Trees is the oldest
nature reserve in Poland. ▼



*The chances of a successful hunt
increase due to the considerable
experience and involvement of
the hosts of the hunting grounds.*



170,91 CIC / 2014



Photo: Archiwum Zamienica Forest District









**OUR HUNTING TRADITION HAS BEEN CULTIVATED FOR MANY
GENERATIONS. WE SHOW OUR RESPECT FOR GAME AND
MAINTAIN INTERPERSONAL TIES FORMED WHILE HUNTING.**

THE POTENTIAL OF OUR HUNTING DISTRICTS

The estimated number of game inhabiting the hunting districts situated in the forest districts of Regional Directorate of the State Forests in Toruń. The projected numbers for 2017.

FOREST DISTRICT	FOREST HUNTING GROUNDS	 RED DEER	 FALLOW DEER	 WILD BOAR	 ROE DEER
BRODNICA	2 600 ha	70	90	100	300
DĄBROWA	9 900 ha	200	600	100	200
LUTÓWKO	8 800 ha	350	250	250	500
RUNOWO	2 800 ha	100	60	70	220
RÓŻANNA	5 500 ha	100	0	110	300
TUCHOLA	2 500 ha	70	10	70	140
ZAMRZENICA	9 700 ha	300	170	200	1200
ZAMRZENICA (WIERZCHLAS)	7 400 ha	220	50	130	900

1.



CONTACT DETAILS

You can choose the desired period and make a reservation in the forest district of your choice via email or by phone.

2.



ARRIVALS

Our hunting lodges are open for everybody. Arrival using your own means of transport. We can pick you up from one of the nearest airports.

3.



TIME FOR A HUNT

Our lodgings are perfectly integrated with the hunting districts.



**Regional Directorate
of the State Forests in Toruń**

**Hunting Department
Regional Directorate
of the State Forests in Toruń**
ul. Mickiewicza 9, 87-100 Toruń
phone +48 56 65 84 300
rdlp@torun.lasy.gov.pl
www.torun.lasy.gov.pl/lowiectwo

